

# CRYOCELL

ULTRA LOW ABLATION  
TEMPERATURES FROM  
THE SIMPLEST DESIGN



Liquid N<sub>2</sub> cryocell for the NWR Platform

## Features

Temperature range -20°C to -100°C

Achieves target temperature in <15 minutes

Stable temperature at -80°C for >6 hours

Easily installed in TwoVol1 or TwoVol2 chamber <2 minutes

Suitable for wet tissues and fluid inclusions

# CryoCell

## Specifications summary

### Performance Specifications

Minimum Temperature	-100°C
Maximum Temperature	-20°C
Working area	100mm x 100mm (50mm cooled) 150mm x 150mm (100mm cooled – option)
Cooling Mechanism	Liquid N <sub>2</sub>
Temperature Control	Closed-loop temperature sensor mounted directly in the chamber
Coolant volume	2 Litres
Time to target temp	<15 minutes
Cooling time (single fill)	>6 hours @ -80°C
Temperature stability	±1°C over 6 hours <0.5% RSD over 6 hours

### Compatibility

Platforms	NWR193, NWR213, NWRfemto, NWRimage
Sample chambers	TwoVol1 (100mm) TwoVol2 (100mm) TwoVol2 (150mm)
Dual Concentric Injector (DCI)	For 10X improved washout times

### Additional Options

Signal Smoothers	Glass bulb signal smoother and Sentinel signal smoother
------------------	---

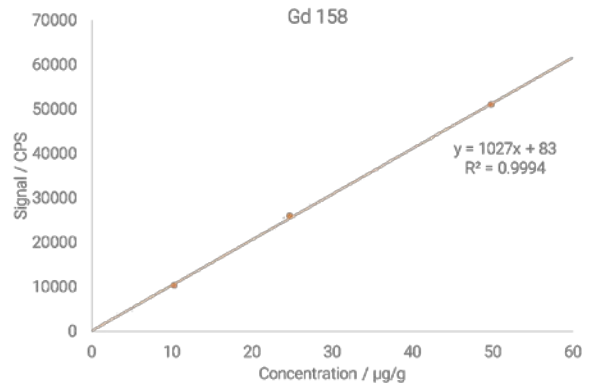


Figure 1. Calibration curve for tissue ablation formed via ablation of "wet" doped Agar gel



Figure 2. A fluid inclusion hosted in quartz